



MONTHLY MEMBERSHIP PROGRESS REPORT

District 26 M4

Results as of: 05/31/2018

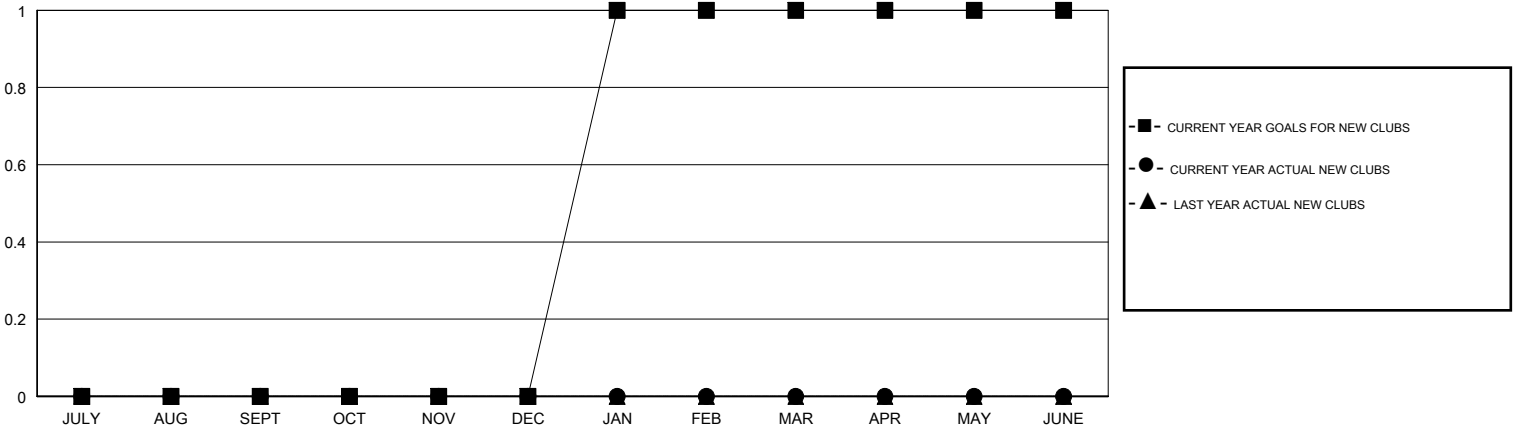
GMT: JOE AL PICONE

LOCATION MISSOURI

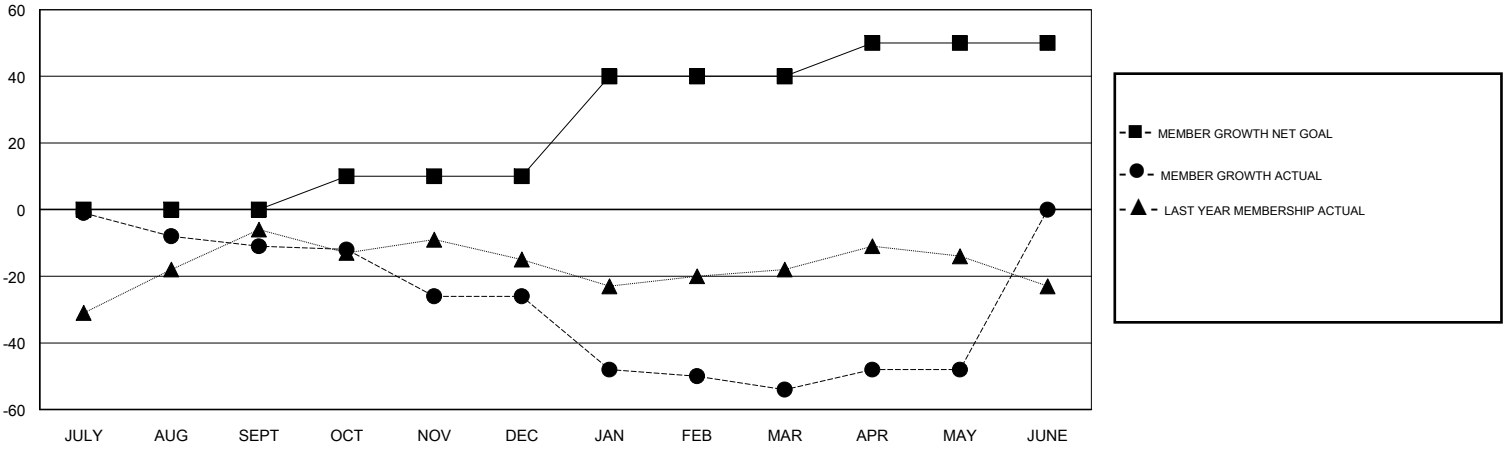
GMT CA

Clubs				Members			
RESULTS FOR 2017-2018				RESULTS FOR 2017-2018			
QUARTER	NEW CLUB GOAL	NEW CLUBS	DROPPED CLUBS	QUARTER	MEMBER GROWTH NET GOAL	MEMBER GROWTH ACTUAL	DROPPED MEMBERS ACTUAL (including transfers)
JULY/AUG/SEPT	0	0	0	JULY/AUG/SEPT	0	28	35
OCT/NOV/DEC	0	0	0	OCT/NOV/DEC	10	27	40
JAN/FEB/MAR	1	0	0	JAN/FEB/MAR	30	25	48
APR/MAY/JUNE	0	0	0	APR/MAY/JUNE	10	27	20

GOALS AND ACTUAL NEW CLUBS CUMULATIVE



GOALS AND ACTUAL MEMBERS CUMULATIVE



DROPPED CLUBS: 0	34 CLUBS OF 58 ADDED 1 OR MORE NEW MEMBERS	<u>GENDER DISTRIBUTION</u>	
		MALE	959 (74.69%)
		FEMALE	325 (25.31%)
		Women Percentage Fiscal Year Goal: 24%	
<u>DROPPED MEMBERS</u>		TOTAL FAMILY UNIT MEMBERS	232
DECEASED	13	FAMILY MEMBERS PAYING HALF DUES	118
CLUB CANCELLED	0		
OTHER	130		
TOTAL	143		

[CLICK HERE FOR CUMULATIVE MEMBERSHIP DATA](#)